

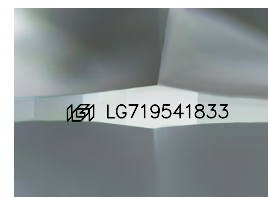
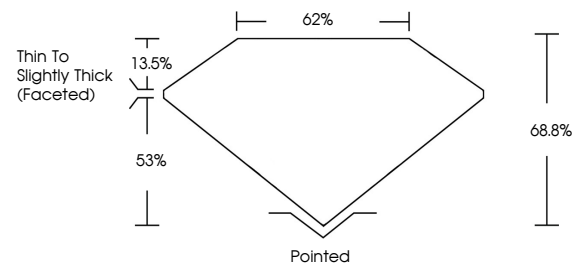


ELECTRONIC COPY

LABORATORY GROWN DIAMOND REPORT

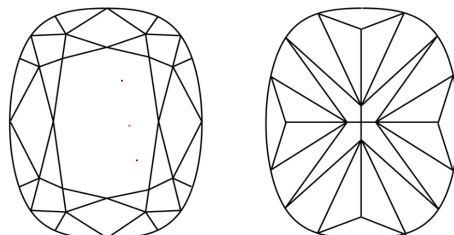
LG719541833
Report verification at igi.org

PROPORTIONS



Sample Image Used

CLARITY CHARACTERISTICS



KEY TO SYMBOLS

Red symbols indicate internal characteristics.
Green symbols indicate external characteristics.

COLOR

D E F G H I J Faint Very Light Light

CLARITY

IF VWS¹⁻² VS¹⁻² SI¹⁻² I¹⁻³

Internally Flawless	Very Very Slightly Included	Very Slightly Included	Slightly Included	Included
------------------------	--------------------------------	---------------------------	----------------------	----------

LABORATORY GROWN DIAMOND REPORT



July 8, 2025

IGI Report Number **LG719541833**

Description	LABORATORY GROWN DIAMOND
-------------	--------------------------

Shape and Cutting Style **CUSHION MODIFIED
BRILLIANT**

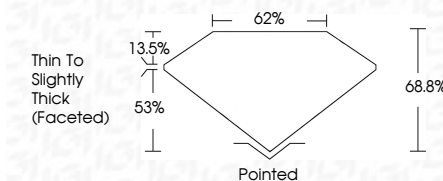
Measurements **9.80 X 7.05 X 4.85 MM**

GRADING RESULTS

Carat Weight **2.55 CARATS**

Color Grade	D
-------------	---

Clarity Grade **VVS 2**



ADDITIONAL GRADING INFORMATION

Polish **EXCELLENT**Symmetry **VERY GOOD**Fluorescence **NONE**Inscription(s) LG719541833

Comments: This Laboratory Grown Diamond was created by Chemical Vapor Deposition (CVD) growth process.
Type IIa



July 8, 2025	2.55 CARATS	Polished
GI Report No.IG719541833	D	EXCELLENT
CLASHION MODIFIED BRILLIANT	VW8 2	VERY GOOD
	69.8%	NONE
	62%	#681G719541833
	Thin to Slightly Thick (faceted)	
8.80 X 7.05 X 4.85 MM		
Carat Weight	Clarity Grade	Color Grade
Color Grade	Depth	Table
	Girdle	Culet
	Flare	Polish
	Finish	Symmetry
	Fluorescence	Fluorescence
	Inscriptions(s)	Inscriptions(s)

Comments:
 Grown Diamond was created by Chemical Vapor Deposition (CVD) growth process.
 Type IIa



THIS DOCUMENT WAS PRODUCED WITH THE FOLLOWING SECURITY MEASURES: SPECIAL DOCUMENT PAPER, INK SCREENS, WATERMARK, BACKGROUND DESIGNS, HOLOGRAM AND OTHER SECURITY FEATURES NOT LISTED AND DO EXCEED DOCUMENT SECURITY INDUSTRY GUIDELINE