



INTERNATIONAL GEMOLOGICAL INSTITUTE

ELECTRONIC COPY



August 21, 2025

IGI Report Number LG729544722

ROUND BRILLIANT
LABORATORY GROWN DIAMOND
4.01 - 4.04 X 2.48 MM

Carat Weight 0.25 CARAT
Color Grade D
Clarity Grade VS 1
Cut Grade EXCELLENT
Polish VERY GOOD
Symmetry VERY GOOD
Fluorescence NONE
Inscription(s) IGI LG729544722

Comments: As Grown - No indication of post-growth treatment. This Laboratory Grown Diamond was created by High Pressure High Temperature (HPHT) growth process. Type II

LABORATORY GROWN DIAMOND REPORT

August 21, 2025
IGI Report Number LG729544722
Description LABORATORY GROWN DIAMOND
Shape and Cutting Style ROUND BRILLIANT
Measurements 4.01 - 4.04 X 2.48 MM

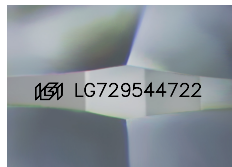
GRADING RESULTS

Carat Weight 0.25 CARAT
Color Grade D
Clarity Grade VS 1
Cut Grade EXCELLENT

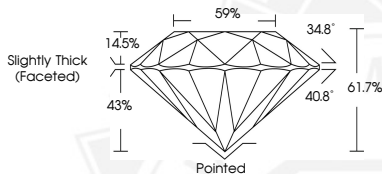
ADDITIONAL GRADING INFORMATION

Polish VERY GOOD
Symmetry VERY GOOD
Fluorescence NONE
Inscription(s) IGI LG729544722

Comments: As Grown - No indication of post-growth treatment. This Laboratory Grown Diamond was created by High Pressure High Temperature (HPHT) growth process. Type II



Sample Image Used



August 21, 2025

IGI Report Number LG729544722

ROUND BRILLIANT
LABORATORY GROWN DIAMOND
4.01 - 4.04 X 2.48 MM

Carat Weight 0.25 CARAT
Color Grade D
Clarity Grade VS 1
Cut Grade EXCELLENT
Polish VERY GOOD
Symmetry VERY GOOD
Fluorescence NONE
Inscription(s) IGI LG729544722

Comments: As Grown - No indication of post-growth treatment. This Laboratory Grown Diamond was created by High Pressure High Temperature (HPHT) growth process. Type II

Certified
SUSTAINABILITY RATED
DIAMOND

SCS GLOBAL SERVICES

All certified diamonds come with an individual certificate, ONLY available at an accredited retailer



FOR THE SUSTAINABILITY RATED CERTIFICATE, CLICK/SCAN HERE →



THIS DOCUMENT WAS PRODUCED WITH THE FOLLOWING SECURITY MEASURES: SPECIAL DOCUMENT PAPER, INK SCREENS, WATERMARK, BACKGROUND DESIGNS, HOLOGRAM AND OTHER SECURITY FEATURES NOT LISTED AND DO EXCEED DOCUMENT SECURITY INDUSTRY GUIDELINES.

For terms & conditions and to verify this report, please visit www.igi.org