



LABORATORY GROWN DIAMOND REPORT

November 26, 2025

IGI Report Number

LG750598272

Description

LABORATORY GROWN DIAMOND

Shape and Cutting Style

HEXAGONAL MODIFIED STEP CUT

Measurements

8.75 X 4.31 X 2.66 MM

GRADING RESULTS

Carat Weight

0.75 CARAT

Color Grade

E

Clarity Grade

VS 1

ADDITIONAL GRADING INFORMATION

Polish

EXCELLENT

Symmetry

EXCELLENT

Fluorescence

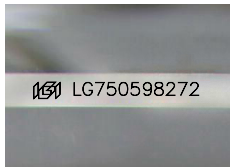
NONE

Inscription(s)

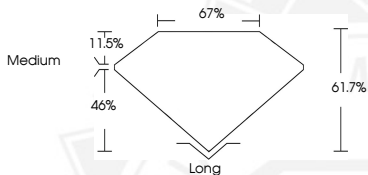
IGI LG750598272

Comments: This Laboratory Grown Diamond was created by
Chemical Vapor Deposition (CVD) growth process.

Type IIa



Sample Image Used



November 26, 2025

IGI Report Number **LG750598272**

HEXAGONAL MODIFIED STEP CUT

LABORATORY GROWN DIAMOND

8.75 X 4.31 X 2.66 MM

Carat Weight **0.75 CARAT**

Color Grade **E**

Clarity Grade **VS 1**

Polish **EXCELLENT**

Symmetry **EXCELLENT**

Fluorescence **NONE**

Inscription(s) **IGI LG750598272**

Comments: This Laboratory Grown
Diamond was created by
Chemical Vapor Deposition (CVD)
growth process. Type IIa



November 26, 2025

IGI Report Number **LG750598272**

HEXAGONAL MODIFIED STEP CUT

LABORATORY GROWN DIAMOND

8.75 X 4.31 X 2.66 MM

Carat Weight **0.75 CARAT**

Color Grade **E**

Clarity Grade **VS 1**

Polish **EXCELLENT**

Symmetry **EXCELLENT**

Fluorescence **NONE**

Inscription(s) **IGI LG750598272**

Comments: This Laboratory Grown
Diamond was created by
Chemical Vapor Deposition (CVD)
growth process. Type IIa



THIS DOCUMENT WAS PRODUCED WITH THE FOLLOWING SECURITY MEASURES: SPECIAL DOCUMENT PAPER, INK SCREENS, WATERMARK, BACKGROUND DESIGNS, HOLOGRAM AND OTHER SECURITY FEATURES NOT LISTED AND DO EXCEED DOCUMENT SECURITY INDUSTRY GUIDELINES.