



March 2, 2026

IGI Report Number **LG779611350**

**ROUND BRILLIANT
LABORATORY GROWN DIAMOND
4.27 - 4.30 X 2.68 MM**

| | |
|----------------|------------------------|
| Carat Weight | 0.30 CARAT |
| Color Grade | D |
| Clarity Grade | VS 1 |
| Cut Grade | IDEAL |
| Polish | EXCELLENT |
| Symmetry | EXCELLENT |
| Fluorescence | NONE |
| Inscription(s) | IGI LG779611350 |

Comments: This Laboratory Grown Diamond was created by Chemical Vapor Deposition (CVD) growth process. Type IIa

LABORATORY GROWN DIAMOND REPORT

| | |
|-------------------------|---------------------------------|
| March 2, 2026 | |
| IGI Report Number | LG779611350 |
| Description | LABORATORY GROWN DIAMOND |
| Shape and Cutting Style | ROUND BRILLIANT |
| Measurements | 4.27 - 4.30 X 2.68 MM |

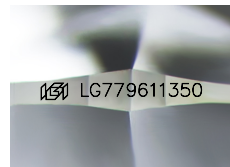
GRADING RESULTS

| | |
|---------------|-------------------|
| Carat Weight | 0.30 CARAT |
| Color Grade | D |
| Clarity Grade | VS 1 |
| Cut Grade | IDEAL |

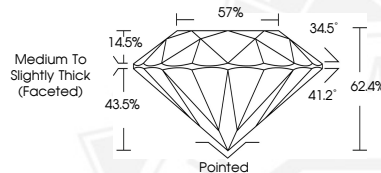
ADDITIONAL GRADING INFORMATION

| | |
|----------------|------------------------|
| Polish | EXCELLENT |
| Symmetry | EXCELLENT |
| Fluorescence | NONE |
| Inscription(s) | IGI LG779611350 |

Comments: This Laboratory Grown Diamond was created by Chemical Vapor Deposition (CVD) growth process. Type IIa



Sample Image Used



March 2, 2026

IGI Report Number **LG779611350**

**ROUND BRILLIANT
LABORATORY GROWN DIAMOND
4.27 - 4.30 X 2.68 MM**

| | |
|----------------|------------------------|
| Carat Weight | 0.30 CARAT |
| Color Grade | D |
| Clarity Grade | VS 1 |
| Cut Grade | IDEAL |
| Polish | EXCELLENT |
| Symmetry | EXCELLENT |
| Fluorescence | NONE |
| Inscription(s) | IGI LG779611350 |

Comments: This Laboratory Grown Diamond was created by Chemical Vapor Deposition (CVD) growth process. Type IIa



THIS DOCUMENT WAS PRODUCED WITH THE FOLLOWING SECURITY MEASURES: SPECIAL DOCUMENT PAPER, INK SCREENS, WATERMARK, BACKGROUND DESIGNS, HOLOGRAM AND OTHER SECURITY FEATURES NOT LISTED AND DO EXCEED DOCUMENT SECURITY INDUSTRY GUIDELINES.