



ELECTRONIC COPY

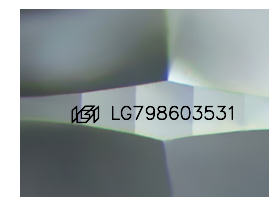
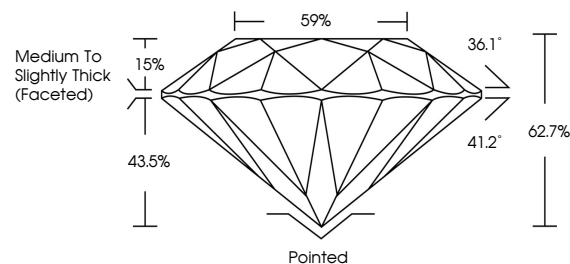
LG798603531 Report verification at igi.org



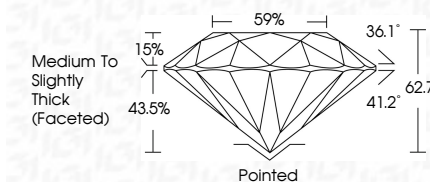
May 9, 2026 IGI Report Number LG798603531 Description LABORATORY GROWN DIAMOND Shape and Cutting Style ROUND BRILLIANT Measurements 6.37 - 6.42 X 4.01 MM GRADING RESULTS Carat Weight 1.02 CARAT Color Grade D Clarity Grade VVS 1 Cut Grade EXCELLENT

May 9, 2026 IGI Report Number LG798603531 Description LABORATORY GROWN DIAMOND Shape and Cutting Style ROUND BRILLIANT Measurements 6.37 - 6.42 X 4.01 MM GRADING RESULTS Carat Weight 1.02 CARAT Color Grade D Clarity Grade VVS 1 Cut Grade EXCELLENT

PROPORTIONS



Sample Image Used



ADDITIONAL GRADING INFORMATION

Polish EXCELLENT Symmetry EXCELLENT Fluorescence NONE Inscription(s) LG798603531

Comments: As Grown - No indication of post-growth treatment. This Laboratory Grown Diamond was created by High Pressure High Temperature (HPHT) growth process. Type II

COLOR

D E F G H I J Faint Very Light Light

CLARITY

FL IF VVS 1-2 VS 1-2 SI 1-2 I 1-3 Flawless Internally Flawless Very Very Slightly Included Very Slightly Included Slightly Included Included

ADDITIONAL GRADING INFORMATION

Polish EXCELLENT Symmetry EXCELLENT Fluorescence NONE Inscription(s) LG798603531 Comments: As Grown - No indication of post-growth treatment. This Laboratory Grown Diamond was created by High Pressure High Temperature (HPHT) growth process. Type II



IGI

May 9, 2026 IGI Report No LG798603531 ROUND BRILLIANT 6.37 - 6.42 X 4.01 MM 1.02 CARAT D VVS 1 EXCELLENT 62.7% 59% Medium To Slightly Thick (Faceted) Pointed EXCELLENT EXCELLENT NONE NONE LG798603531 Comments: As Grown - No indication of post-growth treatment. This Laboratory Grown Diamond was created by High Pressure High Temperature (HPHT) growth process. Type II