



INTERNATIONAL GEMOLOGICAL INSTITUTE

ELECTRONIC COPY

LABORATORY GROWN DIAMOND REPORT

LG566322534

LABORATORY GROWN DIAMOND REPORT

IGI LABORATORY GROWN DIAMOND IDENTIFICATION REPORT

January 27, 2023
IGI Report Number LG566322534
Description LABORATORY GROWN DIAMOND
Shape and Cutting Style ROUND BRILLIANT
Measurements 4.94 - 4.98 X 3.11 MM

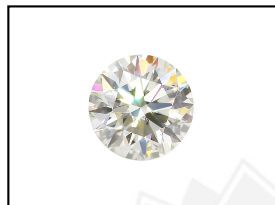
GRADING RESULTS

Carat Weight 0.47 CARAT
Color Grade D
Clarity Grade VVS 1
Cut Grade EXCELLENT

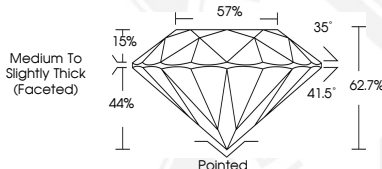
ADDITIONAL GRADING INFORMATION

Polish EXCELLENT
Symmetry EXCELLENT
Fluorescence NONE
Inscription(s) LABGROWN (IGI) LG566322534

Comments: As Grown - No indication of post-growth treatment. This Laboratory Grown Diamond was created by High Pressure High Temperature (HPHT) growth process. Type II



LASERSCRIBE SM
Sample Images Used



IGI LABORATORY GROWN DIAMOND ID REPORT

January 27, 2023
IGI Report Number LG566322534
ROUND BRILLIANT
4.94 - 4.98 X 3.11 MM
Carat Weight 0.47 CARAT
Color Grade D
Clarity Grade VVS 1
Cut Grade EXCELLENT
Polish EXCELLENT
Symmetry EXCELLENT
Fluorescence NONE
Inscription(s) LABGROWN (IGI) LG566322534

Comments: As Grown - No indication of post-growth treatment. This Laboratory Grown Diamond was created by High Pressure High Temperature (HPHT) growth process. Type II

IGI LABORATORY GROWN DIAMOND ID REPORT

January 27, 2023
IGI Report Number LG566322534
ROUND BRILLIANT
4.94 - 4.98 X 3.11 MM
Carat Weight 0.47 CARAT
Color Grade D
Clarity Grade VVS 1
Cut Grade EXCELLENT
Polish EXCELLENT
Symmetry EXCELLENT
Fluorescence NONE
Inscription(s) LABGROWN (IGI) LG566322534

Comments: As Grown - No indication of post-growth treatment. This Laboratory Grown Diamond was created by High Pressure High Temperature (HPHT) growth process. Type II



THIS DOCUMENT WAS PRODUCED WITH THE FOLLOWING SECURITY MEASURES: SPECIAL DOCUMENT PAPER, INK SCREENS, WATERMARK, BACKGROUND DESIGN, HOLOGRAM AND OTHER SECURITY FEATURES NOT LISTED AND DO EXCEED DOCUMENT SECURITY INDUSTRY GUIDELINES.

For terms & conditions and to verify this report, please visit www.igi.org