



**INTERNATIONAL  
GEMOLOGICAL  
INSTITUTE**

**ELECTRONIC COPY**

**LABORATORY GROWN  
DIAMOND REPORT**

**LG569322769**

**IGI LABORATORY GROWN  
DIAMOND ID REPORT**

February 16, 2023  
IGI Report Number **LG569322769**  
**ROUND BRILLIANT**  
**4.67 - 4.70 X 2.93 MM**  
Carat Weight 0.40 CARAT  
Color Grade D  
Clarity Grade VVS 1  
Cut Grade EXCELLENT  
Polish EXCELLENT  
Symmetry EXCELLENT  
Fluorescence NONE  
Inscription(s) **IGI LG569322769**

**LABORATORY GROWN DIAMOND REPORT**

**IGI LABORATORY GROWN DIAMOND IDENTIFICATION REPORT**

February 16, 2023  
IGI Report Number LG569322769  
Description LABORATORY GROWN DIAMOND  
Shape and Cutting Style ROUND BRILLIANT  
Measurements 4.67 - 4.70 X 2.93 MM

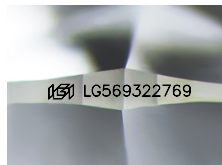
**GRADING RESULTS**

Carat Weight 0.40 CARAT  
Color Grade D  
Clarity Grade VVS 1  
Cut Grade EXCELLENT

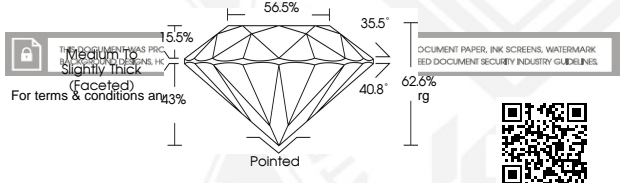
**ADDITIONAL GRADING INFORMATION**

Polish EXCELLENT  
Symmetry EXCELLENT  
Fluorescence NONE  
Inscription(s) **IGI LG569322769**

Comments: As Grown - No indication of post-growth treatment.  
This Laboratory Grown Diamond was created by High Pressure High Temperature (HPHT) growth process.  
Type II



Sample Image Used



**IGI LABORATORY GROWN  
DIAMOND ID REPORT**

February 16, 2023  
IGI Report Number **LG569322769**  
**ROUND BRILLIANT**  
**4.67 - 4.70 X 2.93 MM**  
Carat Weight 0.40 CARAT  
Color Grade D  
Clarity Grade VVS 1  
Cut Grade EXCELLENT  
Polish EXCELLENT  
Symmetry EXCELLENT  
Fluorescence NONE  
Inscription(s) **IGI LG569322769**

Comments: As Grown - No indication of post-growth treatment.  
This Laboratory Grown Diamond was created by High Pressure High Temperature (HPHT) growth process.  
Type II