



ELECTRONIC COPY

LABORATORY GROWN DIAMOND REPORT

January 10, 2024
 IGI Report Number **LG578331605**
 Description **LABORATORY GROWN
DIAMOND**
 Shape and Cutting Style **SQUARE CUSHION MODIFIED
BRILLIANT**
 Measurements **7.05 X 6.74 X 4.29 MM**

GRADING RESULTS

Carat Weight **1.72 CARAT**
 Color Grade **E**
 Clarity Grade **VS 1**

ADDITIONAL GRADING INFORMATION

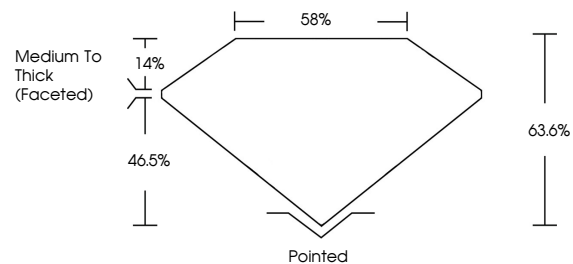
Polish **EXCELLENT**
 Symmetry **EXCELLENT**
 Fluorescence **NONE**
 Inscription(s) **IGI LG578331605**

Comments: This Laboratory Grown Diamond was created by Chemical Vapor Deposition (CVD) growth process and may include post-growth treatment. Type IIa

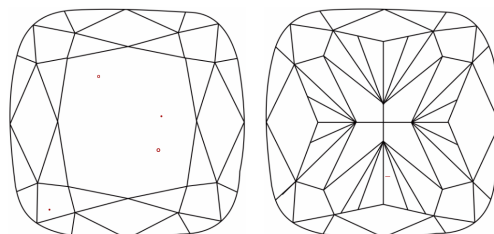
LABORATORY GROWN DIAMOND REPORT

LG578331605
 Report verification at igi.org

PROPORTIONS



CLARITY CHARACTERISTICS



KEY TO SYMBOLS

Red symbols indicate internal characteristics.
 Green symbols indicate external characteristics.

**LABORATORY GROWN
DIAMOND REPORT**

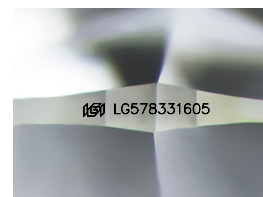
GRADING SCALES

CLARITY

IF	VVS ¹⁻²	VS ¹⁻²	SI ¹⁻²	I ¹⁻³
Internally Flawless	Very Very Slightly Included	Very Slightly Included	Slightly Included	Included

COLOR

D	E	F	G	H	I	J	Faint	Very Light	Light



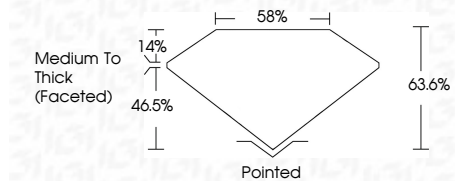
Sample Image Used

LABORATORY GROWN DIAMOND REPORT

January 10, 2024
 IGI Report Number **LG578331605**
 Description **LABORATORY GROWN
DIAMOND**
 Shape and Cutting Style **SQUARE CUSHION MODIFIED
BRILLIANT**
 Measurements **7.05 X 6.74 X 4.29 MM**

GRADING RESULTS

Carat Weight **1.72 CARAT**
 Color Grade **E**
 Clarity Grade **VS 1**



ADDITIONAL GRADING INFORMATION

Polish **EXCELLENT**
 Symmetry **EXCELLENT**
 Fluorescence **NONE**
 Inscription(s) **IGI LG578331605**
 Comments: This Laboratory Grown Diamond was created by Chemical Vapor Deposition (CVD) growth process and may include post-growth treatment. Type IIa



IGI



January 10, 2024
 IGI Report No **LG578331605**
SQUARE CUSHION MODIFIED BRILLIANT
7.05 X 6.74 X 4.29 MM
 Carat Weight **1.72 CARAT**
 Color Grade **E**
 Clarity Grade **VS 1**
 Depth **63.6%**
 Table **58%**
 Girdle **Medium To Thick (Faceted)**
 Culet **Pointed**
 Polish **EXCELLENT**
 Symmetry **EXCELLENT**
 Fluorescence **NONE**
 Inscription(s) **IGI LG578331605**
 Comments: This Laboratory Grown Diamond was created by Chemical Vapor Deposition (CVD) growth process and may include post-growth treatment. Type IIa