



**ELECTRONIC COPY**

**LABORATORY GROWN DIAMOND REPORT**

LG579372741

Report verification at [igi.org](http://igi.org)

**LABORATORY GROWN  
DIAMOND REPORT**

**LABORATORY GROWN DIAMOND REPORT**

**LABORATORY GROWN DIAMOND REPORT**

May 4, 2023  
 IGI Report Number **LG579372741**  
 Description **LABORATORY GROWN  
DIAMOND**  
 Shape and Cutting Style **HEXAGONAL STEP CUT**  
 Measurements **6.71 X 5.83 X 3.53 MM**

**GRADING RESULTS**

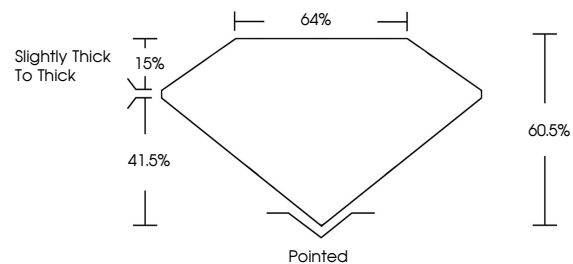
Carat Weight **1.03 CARAT**  
 Color Grade **F**  
 Clarity Grade **VVS 2**

**ADDITIONAL GRADING INFORMATION**

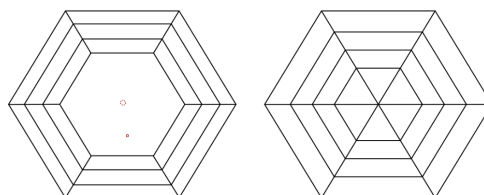
Polish **EXCELLENT**  
 Symmetry **EXCELLENT**  
 Fluorescence **NONE**  
 Inscription(s) **IGI LG579372741**

Comments: As Grown - No indication of post-growth treatment.  
 This Laboratory Grown Diamond was created by High Pressure High Temperature (HPHT) growth process.  
 Type II

**PROPORTIONS**



**CLARITY CHARACTERISTICS**



**KEY TO SYMBOLS**

Red symbols indicate internal characteristics.  
 Green symbols indicate external characteristics.

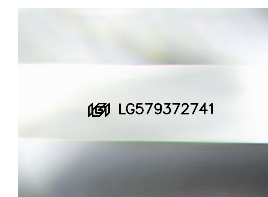
**GRADING SCALES**

**CLARITY**

IF	VVS <sup>1-2</sup>	VS <sup>1-2</sup>	SI <sup>1-2</sup>	I <sup>1-3</sup>
Internally Flawless	Very Very Slightly Included	Very Slightly Included	Slightly Included	Included

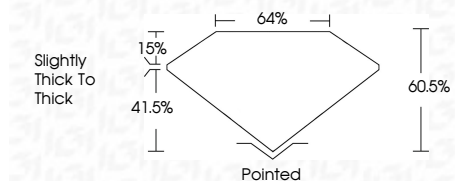
**COLOR**

D	E	F	G	H	I	J	Faint	Very Light	Light
---	---	---	---	---	---	---	-------	------------	-------



Sample Image Used

May 4, 2023  
 IGI Report Number **LG579372741**  
 Description **LABORATORY GROWN  
DIAMOND**  
 Shape and Cutting Style **HEXAGONAL STEP CUT**  
 Measurements **6.71 X 5.83 X 3.53 MM**  
**GRADING RESULTS**  
 Carat Weight **1.03 CARAT**  
 Color Grade **F**  
 Clarity Grade **VVS 2**



**ADDITIONAL GRADING INFORMATION**

Polish **EXCELLENT**  
 Symmetry **EXCELLENT**  
 Fluorescence **NONE**  
 Inscription(s) **IGI LG579372741**  
 Comments: As Grown - No indication of post-growth treatment.  
 This Laboratory Grown Diamond was created by High Pressure High Temperature (HPHT) growth process.  
 Type II



May 4, 2023  
 IGI Report No **LG579372741**  
**HEXAGONAL STEP CUT**  
**6.71 X 5.83 X 3.53 MM**  
 Carat Weight **1.03 CARAT**  
 Color Grade **F**  
 Clarity Grade **VVS 2**  
 Depth **60.5%**  
 Table **64%**  
 Girdle **Slightly thick to thick**  
 Culet **Pointed**  
 Polish **EXCELLENT**  
 Symmetry **EXCELLENT**  
 Fluorescence **NONE**  
 Inscription(s) **IGI LG579372741**  
 Comments: As Grown - No indication of post-growth treatment.  
 This Laboratory Grown Diamond was created by High Pressure High Temperature (HPHT) growth process.  
 Type II

