



ELECTRONIC COPY

LABORATORY GROWN DIAMOND REPORT

July 25, 2023	
IGI Report Number	LG592323152
Description	LABORATORY GROWN DIAMOND
Shape and Cutting Style	ROUND BRILLIANT
Measurements	6.48 - 6.52 X 4.04 MM

GRADING RESULTS

Carat Weight	1.06 CARAT
Color Grade	H
Clarity Grade	VS 1
Cut Grade	IDEAL

ADDITIONAL GRADING INFORMATION

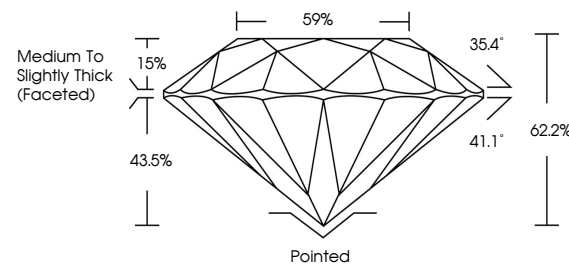
Polish	EXCELLENT
Symmetry	EXCELLENT
Fluorescence	NONE
Inscription(s)	15 LG592323152

Comments: This Laboratory Grown Diamond was created by Chemical Vapor Deposition (CVD) growth process and may include post-growth treatment.
Type IIa

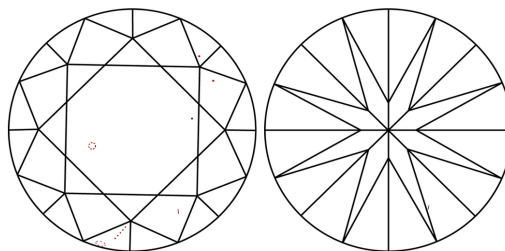
LABORATORY GROWN DIAMOND REPORT

LG592323152
Report verification at igi.org

PROPORTIONS



CLARITY CHARACTERISTICS



KEY TO SYMBOLS

Red symbols indicate internal characteristics.
Green symbols indicate external characteristics.

LABORATORY GROWN
DIAMOND REPORT

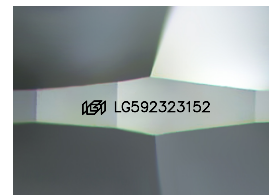
GRADING SCALES

CLARITY

IF	VVS ¹⁻²	VS ¹⁻²	SI ¹⁻²	I ¹⁻³
Internally Flawless	Very Very Slightly Included	Very Slightly Included	Slightly Included	Included

COLOR

D E F G H I J Faint Very Light Light



Sample Image Used



© IGI 2020, International Gemmological Institute

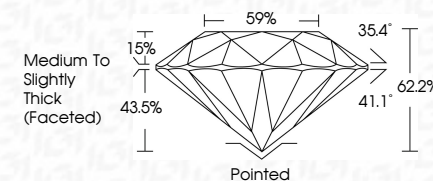
FD - 10 20

www.igi.org

LABORATORY GROWN DIAMOND REPORT

July 25, 2023	
IGI Report Number	LG592323152
Description	LABORATORY GROWN DIAMOND
Shape and Cutting Style	ROUND BRILLIANT
Measurements	6.48 - 6.52 X 4.04 MM

Carat Weight	1.06 CARAT
Color Grade	H
Clarity Grade	VS 1
Cut Grade	IDEAL



ADDITIONAL GRADING INFORMATION

Polish	EXCELLENT
Symmetry	EXCELLENT
Fluorescence	NONE
Inscription(s)	 LG592323152

Comments: This Laboratory Grown Diamond was created by Chemical Vapor Deposition (CVD) growth process and may include post-growth treatment.
Type IIa



IG

July 25, 2023	1.05 CARAT
G Report No. LG5922323152	H VS 1
ROUND BRILLIANT	IDEAL
	62.2%
	59%
	Medium to slightly Thick Faceted
	Polished
	EXCELLENT
	EXCELLENT
	NONE
	689 LG5922323152
4.89 - 4.82 X 4.04 MM	
Carat Weight	
Color Grade	
Clarity Grade	
Cut Grade	
Depth	
Table	
Girdle	
Fluorescence	
Symmetry	
Polish	
Culet	
Comments:	
This Laboratory Grown Diamond was created by Chemical Vapor Deposition (CVD) growth process and may include post-growth treatment.	