

ELECTRONIC COPY

LABORATORY GROWN DIAMOND REPORT

September 22, 2023	
IGI Report Number	LG600304674
Description	LABORATORY GROWN DIAMOND
Shape and Cutting Style	ROUND BRILLIANT
Measurements	7.35 - 7.39 X 4.59 MM

GRADING RESULTS

Carat Weight	1.55 CARAT
Color Grade	F
Clarity Grade	VVS 1
Cut Grade	IDEAL

ADDITIONAL GRADING INFORMATION

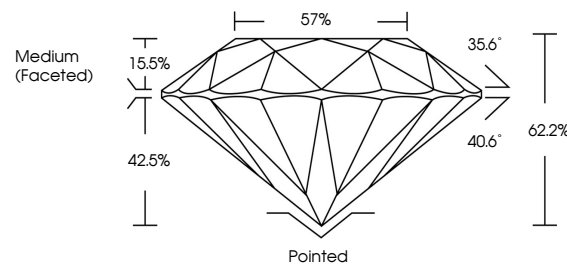
Polish	EXCELLENT
Symmetry	EXCELLENT
Fluorescence	NONE
Inscription(s)	15 LG600304674

Comments: As Grown - No indication of post-growth treatment.
This Laboratory Grown Diamond was created by High Pressure High Temperature (HPHT) growth process.
Type II

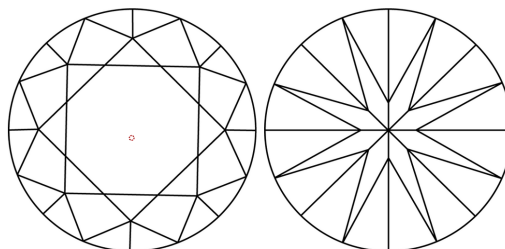
LABORATORY GROWN DIAMOND REPORT

LG600304674
Report verification at igi.org

PROPORTIONS



CLARITY CHARACTERISTICS



KEY TO SYMBOLS

Red symbols indicate internal characteristics.
Green symbols indicate external characteristics.

LABORATORY GROWN
DIAMOND REPORT

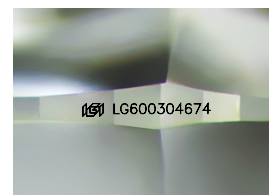
GRADING SCALES

CLARITY

IF	VVS ¹⁻²	VS ¹⁻²	SI ¹⁻²	I ¹⁻³
Internally Flawless	Very Very Slightly Included	Very Slightly Included	Slightly Included	Included

COLOR

D E F G H I J Faint Very Light Light



Sample Image Used



© IGI 2020, International Gemological Institute

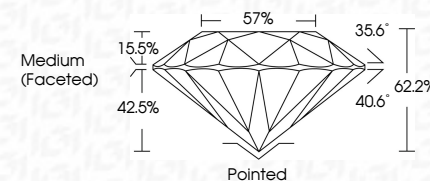
FD - 10 20

LABORATORY GROWN DIAMOND REPORT

September 22, 2023	
IGI Report Number	LG600304674
Description	LABORATORY GROWN DIAMOND
Shape and Cutting Style	ROUND BRILLIANT
Measurements	7.35 - 7.39 X 4.59 MM

GRADING RESULTS

Carat Weight	1.55 CARAT
Color Grade	F
Clarity Grade	VVS 1
Cut Grade	IDEAL



ADDITIONAL GRADING INFORMATION

Polish	EXCELLENT
Symmetry	EXCELLENT
Fluorescence	NONE
Inscription(s)	(G) LG600304674
Comments: As Grown - No indication of post-growth treatment.	
This Laboratory Grown Diamond was created by High Pressure High Temperature (HPHT) growth process.	
Type II	



Sepembre 22, 2023
GJ Report No LGS0030674
R ROUND BRILLIANT
9.35 - 7.97 X 4.59 MM
Coral Weight
Color Grade
VVS 1
F
Ideal
62%
57%
Medium (face-set)
Poished
EXCELLENT
X-FLY
NONE
J89 LGA0030674
No indication of post-growth treatment.
The Laboratory Growth Diamond was created by High Pressure High Temperature (HPHT) growth process.
Type II