



# INTERNATIONAL GEMOLOGICAL INSTITUTE

ELECTRONIC COPY

## LABORATORY GROWN DIAMOND REPORT

LG602315773

### LABORATORY GROWN DIAMOND REPORT

#### IGI LABORATORY GROWN DIAMOND IDENTIFICATION REPORT

October 7, 2023  
IGI Report Number LG602315773  
Description LABORATORY GROWN DIAMOND  
Shape and Cutting Style EMERALD CUT  
Measurements 5.78 X 4.20 X 2.82 MM

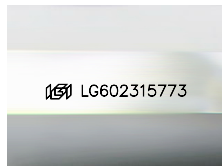
#### GRADING RESULTS

Carat Weight 0.67 CARAT  
Color Grade E  
Clarity Grade SI 1

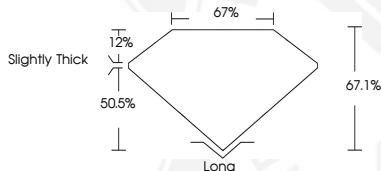
#### ADDITIONAL GRADING INFORMATION

Polish EXCELLENT  
Symmetry EXCELLENT  
Fluorescence NONE  
Inscription(s) IGI LG602315773

Comments: As Grown - No indication of post-growth treatment.  
This Laboratory Grown Diamond was created by High Pressure High Temperature (HPHT) growth process.  
Type II



Sample Image Used



#### IGI LABORATORY GROWN DIAMOND ID REPORT

October 7, 2023  
IGI Report Number LG602315773  
EMERALD CUT  
5.78 X 4.20 X 2.82 MM  
Carat Weight 0.67 CARAT  
Color Grade E  
Clarity Grade SI 1  
Polish EXCELLENT  
Symmetry EXCELLENT  
Fluorescence NONE  
Inscription(s) IGI LG602315773

Comments: As Grown - No indication of post-growth treatment. This Laboratory Grown Diamond was created by High Pressure High Temperature (HPHT) growth process. Type II

#### IGI LABORATORY GROWN DIAMOND ID REPORT

October 7, 2023  
IGI Report Number LG602315773  
EMERALD CUT  
5.78 X 4.20 X 2.82 MM  
Carat Weight 0.67 CARAT  
Color Grade E  
Clarity Grade SI 1  
Polish EXCELLENT  
Symmetry EXCELLENT  
Fluorescence NONE  
Inscription(s) IGI LG602315773

Comments: As Grown - No indication of post-growth treatment. This Laboratory Grown Diamond was created by High Pressure High Temperature (HPHT) growth process. Type II



THIS DOCUMENT WAS PRODUCED WITH THE FOLLOWING SECURITY MEASURES: SPECIAL DOCUMENT PAPER, INK SCREENS, WATERMARK, BACKGROUND DESIGN, HOLOGRAM AND OTHER SECURITY FEATURES NOT LISTED AND DO EXCEED DOCUMENT SECURITY INDUSTRY GUIDELINES.

For terms & conditions and to verify this report, please visit [www.igi.org](http://www.igi.org)