



## LABORATORY GROWN DIAMOND REPORT

## GRADING RESULTS

### ADDITIONAL GRADING INFORMATION

Comments: HEARTS & ARROWS  
This Laboratory Grown Diamond was created by  
Chemical Vapor Deposition (CVD) growth process and  
may include post-growth treatment.  
Type IIa

LG604303725  
Report verification at [igi.org](https://igi.org)

Medium To Slightly Thick (Faceted)

59%

14%

43%

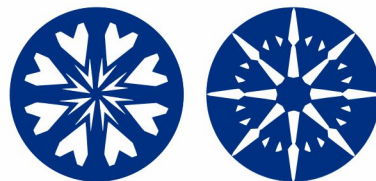
34.1°

40.6°

60.9%

Pointed

Red symbols indicate internal characteristics.  
Green symbols indicate external characteristics.

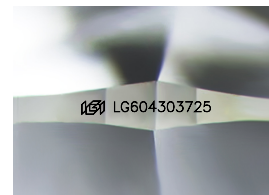


**www.igi.org**

## GRADING SCALES

IF	VVS <sup>1-2</sup>	VS <sup>1-2</sup>	SI <sup>1-2</sup>	I <sup>1-3</sup>
Internally Flawless	Very Very Slightly Included	Very Slightly Included	Slightly Included	Included

D E F G H I J Faint Very Light Light



Sample Image Used



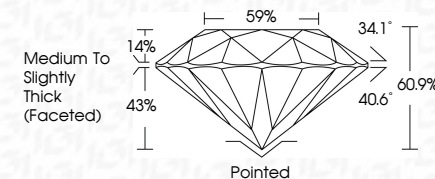
© IGI 2020, International Gemological Institute

FD - 10 20

THIS DOCUMENT WAS PRODUCED WITH THE FOLLOWING SECURITY MEASURES: SPECIAL DOCUMENT PAPER, INK SCREENS, WATERMARK, BACKGROUND DESIGNS, HOLOGRAM AND OTHER SECURITY FEATURES NOT LISTED AND DO EXCEED DOCUMENT SECURITY INDUSTRY GUIDELINE

October 16, 2023	
IGI Report Number	LG604303726
Description	LABORATORY GROWN DIAMOND
Shape and Cutting Style	ROUND BRILLIANT
Measurements	8.36 - 8.39 X 5.10 MM

Carat Weight	2.23 CARATS
Color Grade	E
Clarity Grade	VVS 2
Cut Grade	IDEAL



Polish	EXCELLENT
Symmetry	EXCELLENT
Fluorescence	NONE
Inscription(s)	<del>(G)</del> LG604303725
Comments: HEARTS & ARROWS	
This Laboratory Grown Diamond was created by Chemical Vapor Deposition (CVD) growth process and may include post-growth treatment.	
Type IIa	



IG

October 16, 2023	G Report No LG5404303725	
ROUND BRILLIANT	2.23 CARATS	
Color Weight	Color Grade	E
3.35 - 3.39 X 5.10 MM	Clarity Grade	VVS 2
	Cut Grade	IDEAL
	Depth	60.9%
	Table	59%
	Girdle	Medium to Slightly Thick (excellent)
	Culet	Pointed
	Polish	EXCELLENT
	Symmetry	EXCELLENT
	Fluorescence	NONE
	Inscriptions(s)	LG5404303725

Comments:  
 HEARTS & ARROWS  
 This Laboratory Grown Diamond was created by Chemical Vapor Deposition (CVD) growth process and may include post-growth treatment.